

# Sage Hill Blossom

Pre-Construction  
Town Home  
Now Selling

“Where you dream it,  
we commit it.”

[www.svdev.ca](http://www.svdev.ca)





# Sky Vision Development

## Move In Fall 2023



## Why Sage Hill Blossom

Enjoy living in one of Calgary's most desirable communities with nature at your doorsteps. Sage Hill is a fast-growing community that provides a great place to play, stay active, and enjoy the outdoors. Located only 45 minutes from the Rocky Mountains, the Sage Hill community offers adventures such as hiking, biking, and skiing. In addition to the future Calgary Public Library, the area will have a new transit hub, new schools, and other retail opportunities.

Sky Vision Development brings extraordinary deals for you in Sage Hill. Your dream home is our goal. Quality over quantity is our priority; every home we offer is of the highest quality. We upgrade our standard schedule for our homes every year to ensure our clients' homes are above and beyond code-built homes.

Customer satisfaction is the measure of our success. It is evident in the results. Our business is often referred to us by satisfied customers.



## Important Distance



Crowfoot LRT  
10 Min



Landmark  
Cinema 10 Min



Costco 10 Min



Landmark  
Cinema 10 Min



Market Mall  
15 Min

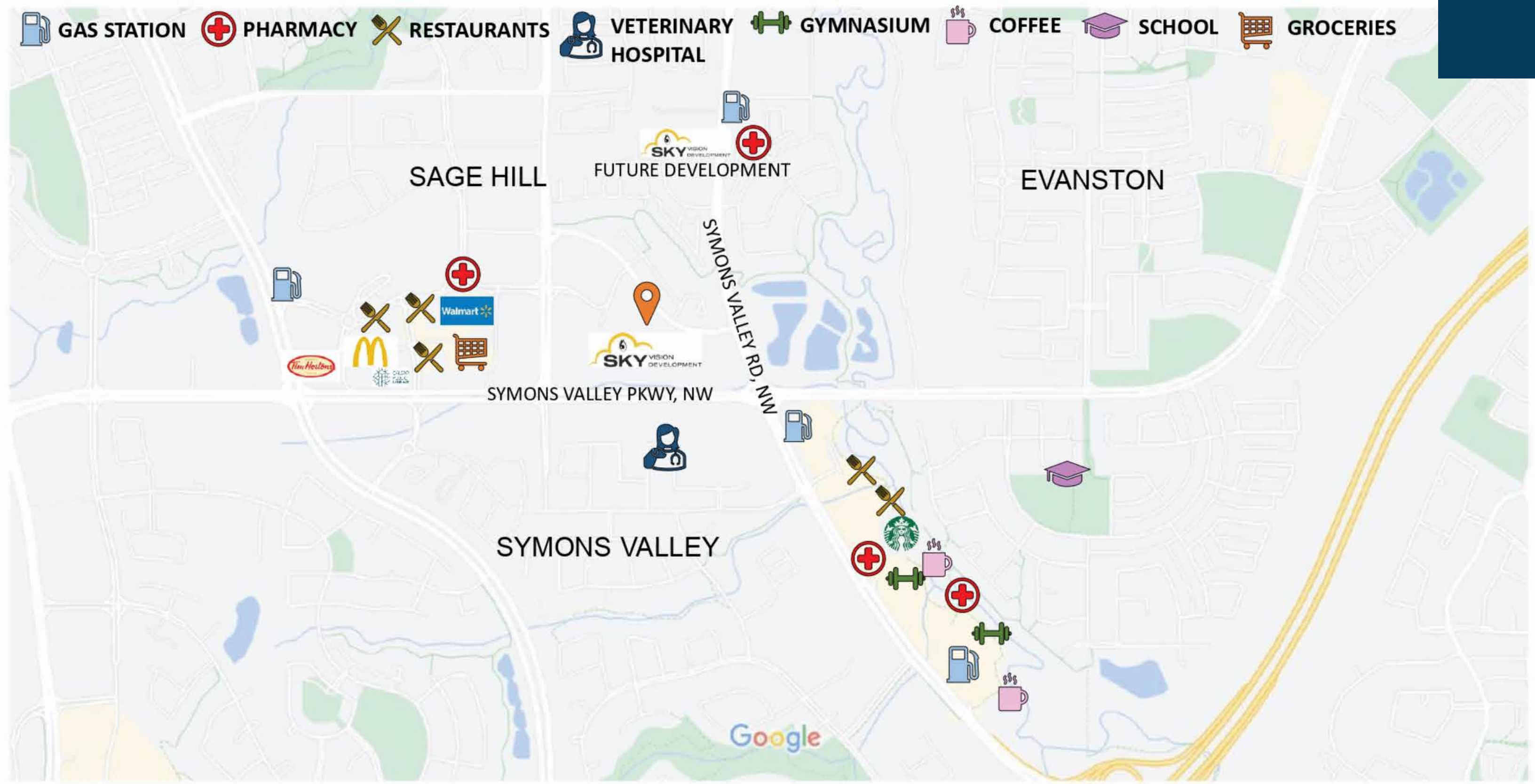


DownTown  
25 Min



Airport 15 Min

 GAS STATION  PHARMACY  RESTAURANTS  VETERINARY HOSPITAL  GYMNASIUM  COFFEE  SCHOOL  GROCERIES



# Amenities

The Sage Hill area is well established and offers all the amenities you need. You can easily access multiple commercial centers with nearby shopping centers like Creekside Shopping Center and Beacon Hill Shopping Centre, Sage Hill Crossing, Sage Hill Plaza, and Sage Hill Quarter.

- MAPLE
- PALM
- JASMINE



# Site Plan

Sky Vision Development offers 96 Pre-Construction Townhomes ready to move in Fall 2023 with tailored floor plans to meet your needs.

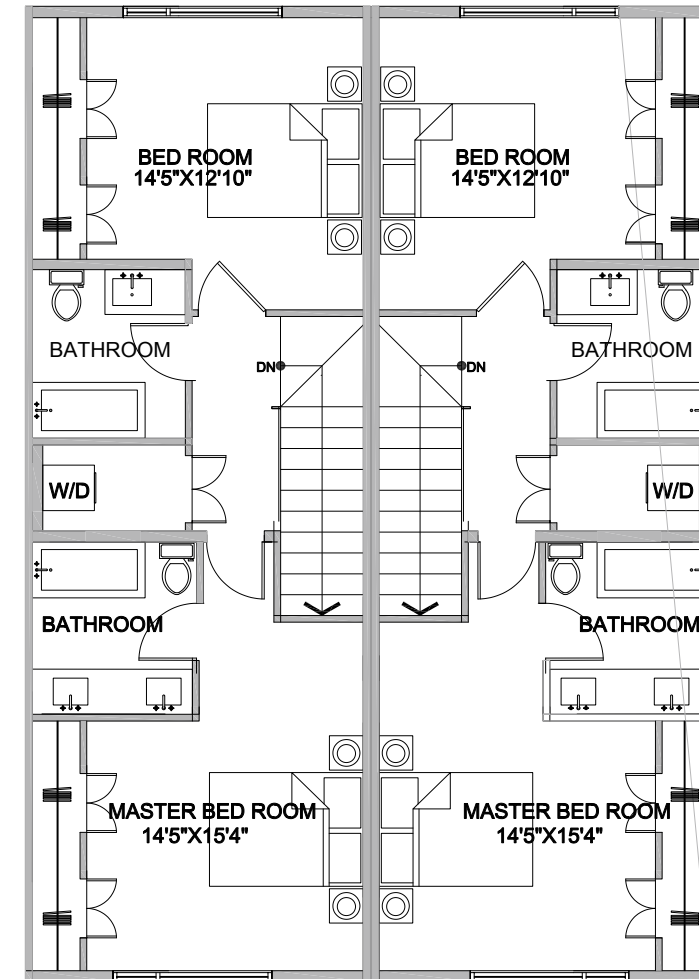
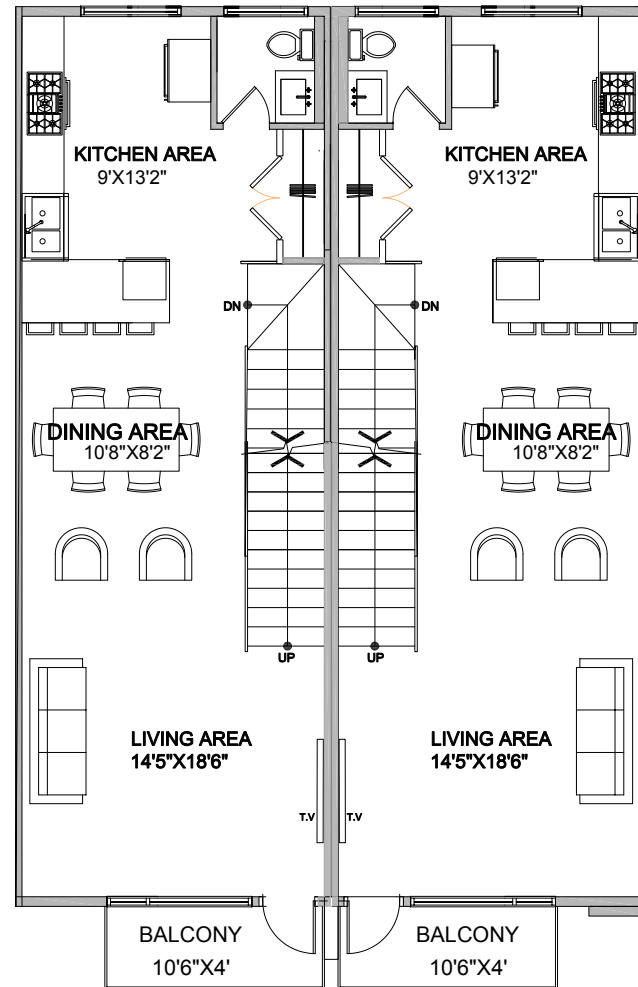
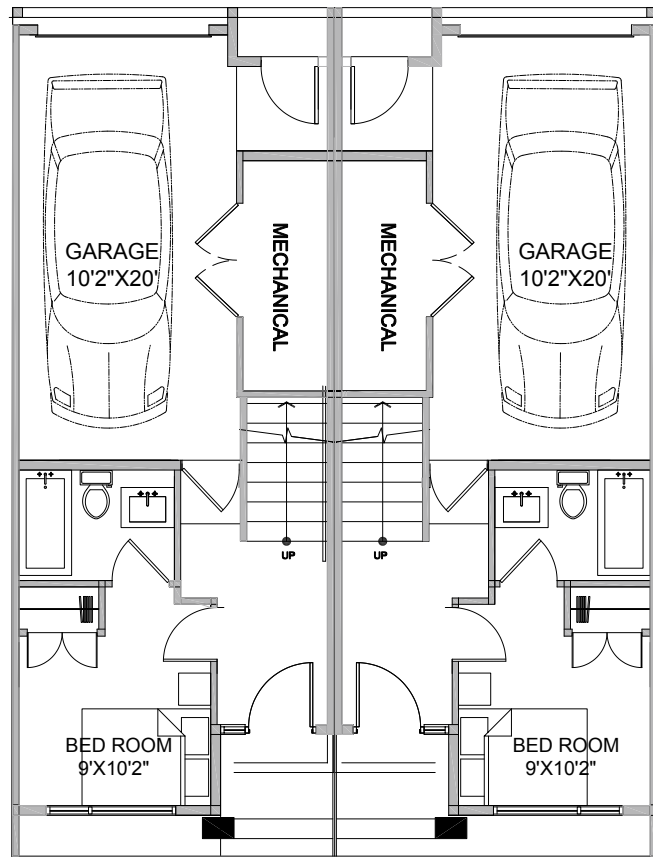
**3527 Sage Hill Dr NW**

SYMONS VALLEY PARKWAY N.W. (128TH AVENUE N.W.)

# Our Packages

## Maple

1425 SQFT | 3 BED | 3.5 BATH



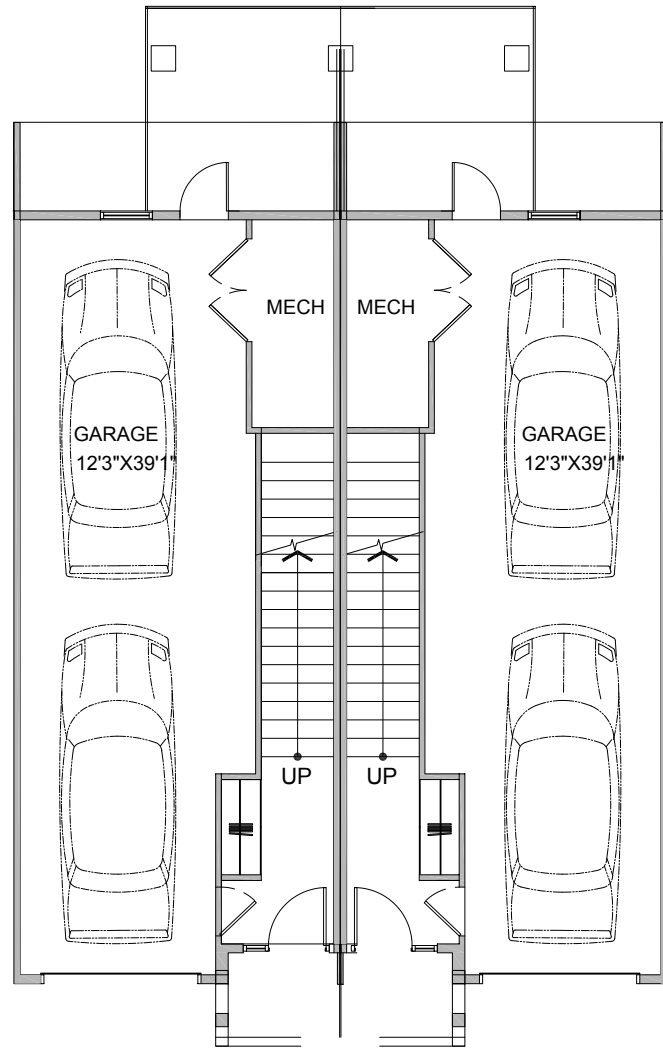
- CEILING HEIGHT - GROUND LEVEL 9FT, MAIN LEVEL 10FT & UPPER LEVEL 8FT
- HARDWOOD IN KITCHEN & LIVING AND CARPET IN BEDROOMS
- COUNTERTOP - QUARTZ IN KITCHEN & WASHROOM
- KITCHEN CABINETS TO THE CEILING

GROUND LEVEL

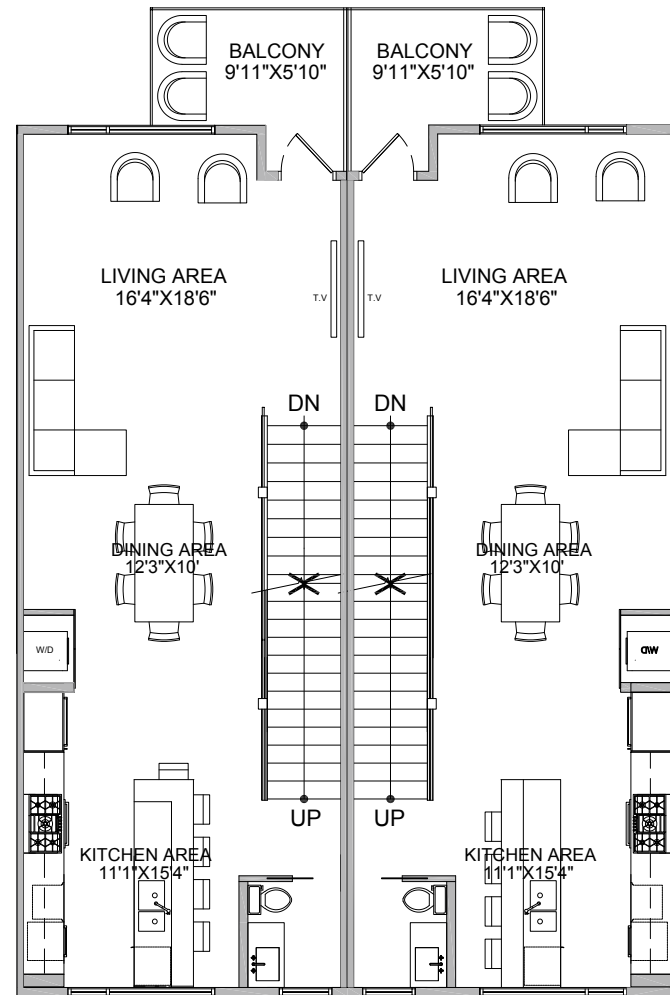
MAIN LEVEL

UPPER LEVEL

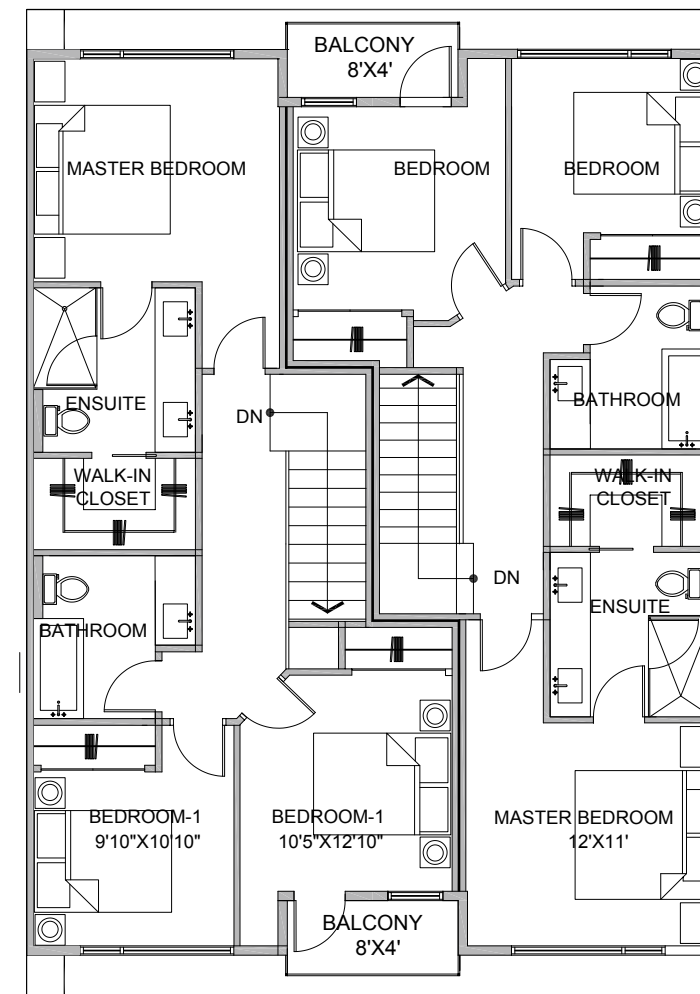
1510 SQFT | 3 BED | 2.5 BATH



**GROUND LEVEL**



**MAIN LEVEL**

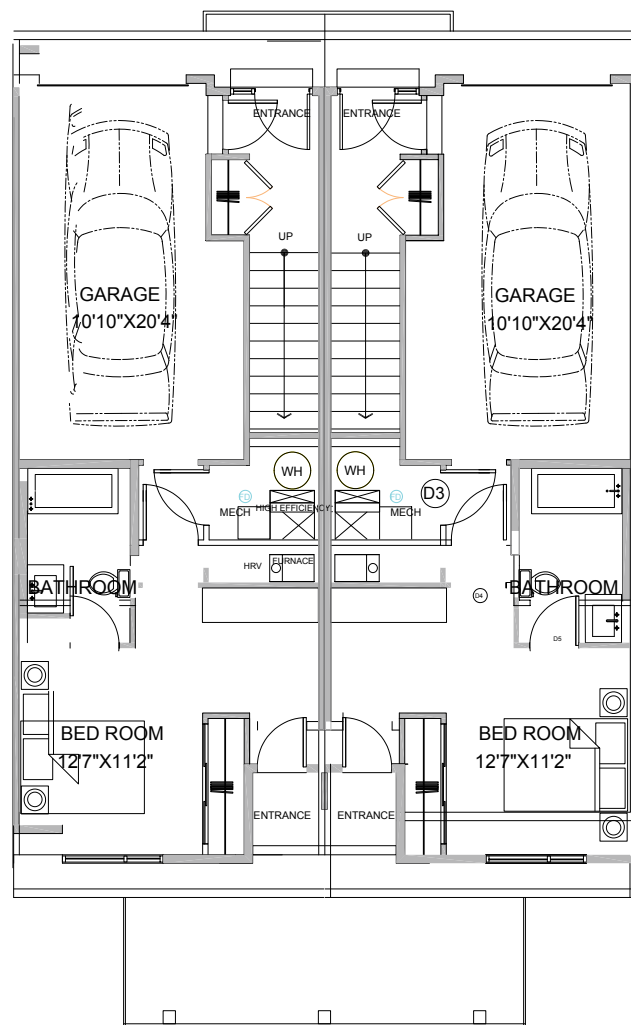


**UPPER LEVEL**

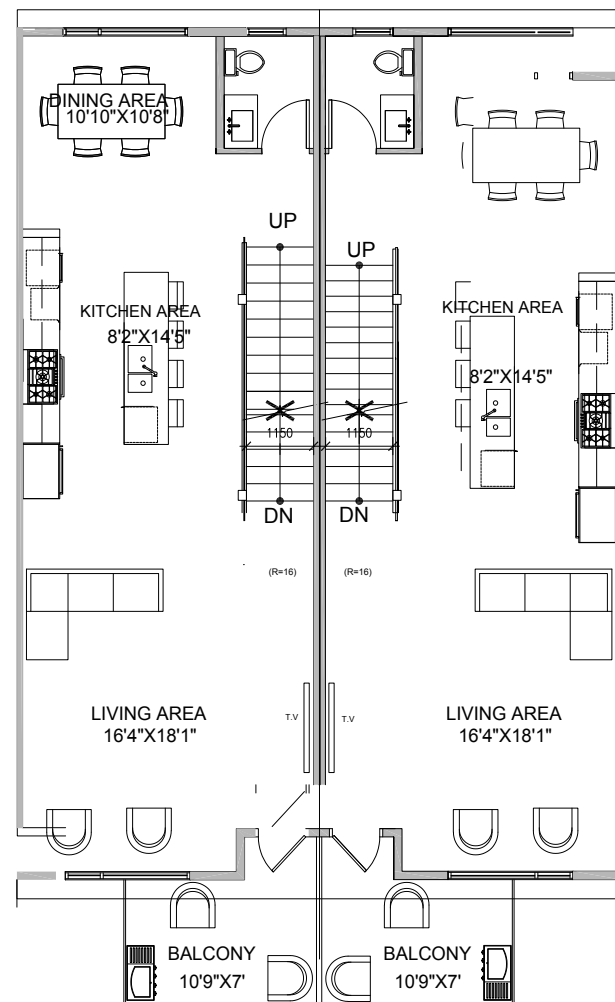
- CEILING HEIGHT - GROUND LEVEL 9FT, MAIN LEVEL 10FT& UPPER LEVEL 8FT
- HARDWOOD IN KITCHEN & LIVING AND CARPET IN BEDROOMS
- COUNTERTOP - QUARTZ IN KITCHEN & WASHROOM
- KITCHEN CABINETS TO THE CEILING

# Jasmine

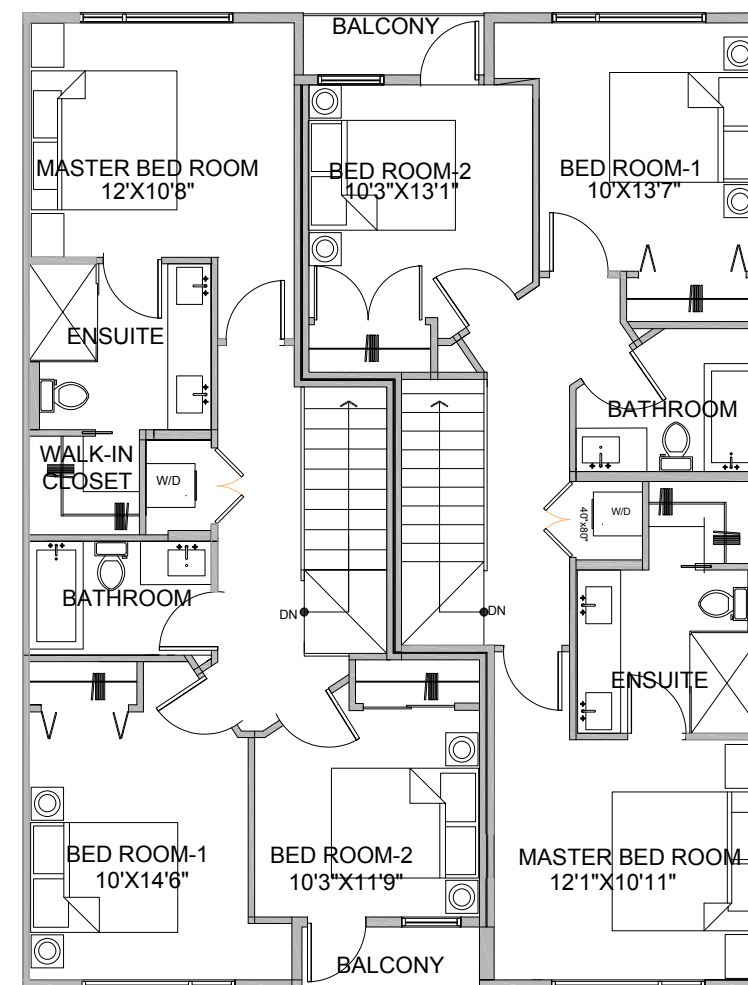
1685 SQFT | 4 BED | 3.5 BATH



**GROUND LEVEL**



**MAIN LEVEL**



**UPPER LEVEL**

- CEILING HEIGHT - GROUND LEVEL 9FT, MAIN LEVEL 10FT & UPPER LEVEL 8FT
- HARDWOOD IN KITCHEN & LIVING AND CARPET IN BEDROOMS
- COUNTERTOP - QUARTZ IN KITCHEN & WASHROOM
- KITCHEN CABINETS TO THE CEILING



## Contact Us

Sky Vision Development  
info@svdev.ca  
403-452-3177

Address : 139-55 Westwinds Cres NE, Calgary, AB T3J 5H2

Office Hours : Monday – Friday 9am – 5pm

Saturday – Sunday Closed

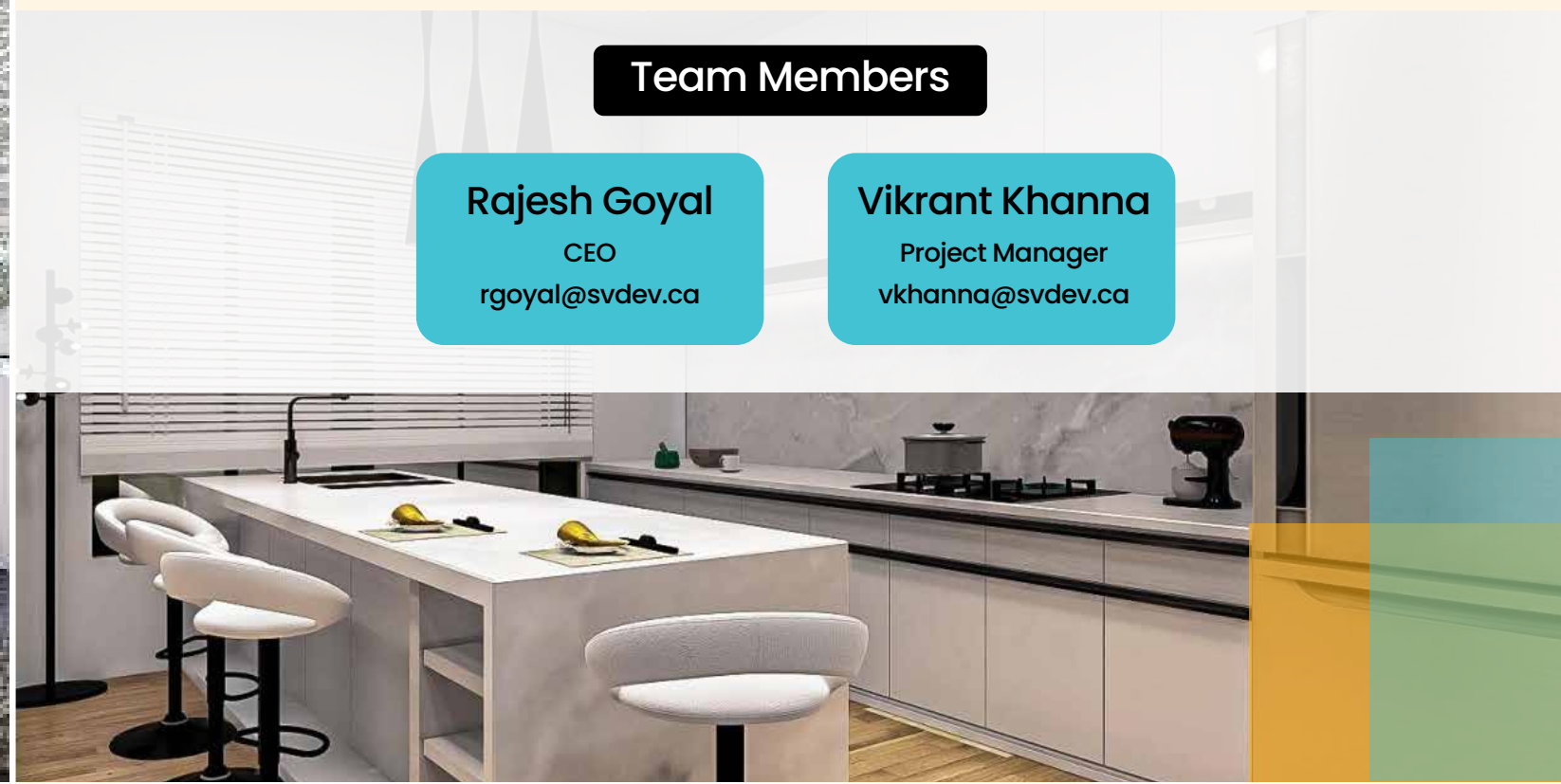
Statutory Holidays Closed



## Team Members

**Rajesh Goyal**  
CEO  
rgoyal@svdev.ca

**Vikrant Khanna**  
Project Manager  
vkhanna@svdev.ca







[www.svdev.ca](http://www.svdev.ca)